

HAMMER UNION



ASP **asian**
SEALING PRODUCTS

ABOUT ASIAN SEALING PRODUCTS

Since 2009, Asian Sealing Products Private Ltd. has proudly manufactured and supplied robust products for the global Oil and Gas Industry. With a profound understanding of the industry's challenges and critical requirements, we consistently deliver excellence.

Our comprehensive product range includes all types of Metallic and non-metallic gaskets, Hammer unions and Fasteners. At Asian Sealing Products, we uphold the highest standards of quality, leveraging advanced manufacturing technologies and a commitment to continuous innovation. This ensures we not only meet but exceed the evolving demands of the industry.



ISO 9001:2015



ISO 14001:2015



ISO 45001: 2018



Reach Certified



API 6A-1189



API 17D-0077

HAMMER UNION OFFERING

Asian Sealing Products specializes in manufacturing Hammer Unions using forged/ Cast raw materials customized to meet your specific service needs. Our Hammer Union lineup includes sizes ranging from 1 to 12 inches, with ratings up to 20,000 PSI of cold working pressure. Additionally, we prioritize quality in producing unions tailored for sour gas service, adhering strictly to standards such as API RP-14E & NACE MR-01-75. ASP-branded Hammer Unions are suitable for replacement with those from WECO or other brands.

Technical Description

Hammer unions are crucial connections in the oil and gas industry, widely recognized for their extensive use. In low-pressure conditions, the conical and spherical surfaces of the female and male subs ensure a dependable metal-to-metal seal. For medium-pressure applications, the male sub often incorporates an 'O' ring along with the metal-to-metal seal. In high-pressure environments, the primary seal in the female sub is typically a lip-type seal ring, providing protection to the secondary metal-to-metal seal from corrosion and effectively managing fluid flow turbulence.

Full Scope Of Offering





Fig. No.	Assembly Colour code	Pressure Rating (PSI)				Nominal Pipe Size (in mm)											
		Standard Service		Sour Gas Service		1	1.25	1.5	2	2.5	3	4	5	6	8	10	12
		Cold Working	Test	Cold Working	Test	25	32	40	50	65	80	100	125	150	200	250	300
50		500	750	NA	NA							✓	✓				
100		1000	1500	NA	NA				✓	✓	✓	✓	✓	✓	✓		
200		2000	3000	NA	NA	✓	✓	✓	✓	✓	✓	✓	✓	✓	✓	✓	
206		2000	3000	NA	NA	✓	✓	✓	✓	✓	✓	✓	✓	✓	✓	✓	
400		2500	3750	2500	3750									✓	✓	✓	✓
400		4000	6000	4000	6000	✓			✓		✓	✓					
600		6000	9000	NA	NA	✓		✓	✓	✓	✓	✓					
602		6000	9000	6000	9000	✓	✓	✓	✓	✓	✓	✓					
1002		10000	15000	7500	11250	✓	✓	✓	✓		✓	✓	✓	✓			
1003		10000	15000	7500	11250				✓		✓	✓	✓				
1502		15000	22500	10000	15000	✓			✓		✓	✓	✓	✓			
2002		20000	30000	NA	NA				✓		✓	✓	✓	✓			
2202		NA	NA	15000	22500				✓		✓	✓	✓	✓			

Fig 50 Union (Recommended for Standard service only)

Key features

- **Size Range** - Available in both 4" and 5".
- **Pressure Rating** - Up to 500 PSI NSCWP (35 bar).
- **Sealing Mechanism** - Metal to Metal seal.
- **End Connection** - Threaded and socket-welded connections are available.
- **Colour Code** - Orange nut & Orange subs.



Fig 100 Union (Recommended for Standard service only)

Key features

- **Size Range** - Available from 2" and up to 8".
- **Pressure Rating** - Up to 1,000 PSI NSCWP (69 bar).
- **Sealing Mechanism** - Metal to Metal seal.
- **End Connection** - Threaded and socket-welded connections are available.
- **Colour Code** - Black nut & Yellow subs.



Fig 200 Union (Recommended for Standard service only)

Key features

- **Size Range** - Available from 1" and up to 10".
- **Pressure Rating** - Up to 2,000 PSI NSCWP (138 bar).
- **Sealing Mechanism** - Metal to Metal seal.
- **End Connection** - Threaded and socket-welded connections are available.
- **Colour Code** - Blue nut & Grey subs.



Fig 206 Union (Fig 200 & Fig 206 have the exact same dimensions, Recommended for Standard service only)

Key features

- **Size Range** - Available from 1" and up to 10".
- **Pressure Rating** - Up to 2,000 PSI NSCWP (138 bar).
- **Sealing Mechanism** - Metal to Metal & an additional O-ring.
- **End Connection** - Threaded and socket-welded connections are available.
- **Colour Code** - Blue nut & Grey subs.

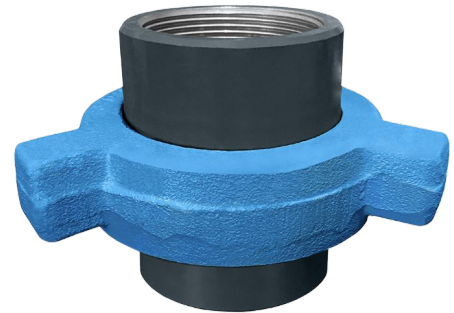


Fig 211 Union

Key features

- **Size Range** - Available up to 3".
- **Pressure rating** - Suitable up to 2,000 PSI NSCWP.
- **Sealing Mechanism** - O-Ring in the male sub & Seal Ring in the female sub.
- **End Connection** - Threaded and Socket weld connections are available.
- **Colour Code** - Grey nut & Blue subs.



Fig 400 Union (Recommended for Standard service only)

Key features

- **Size Range** - Available from 1" and up to 12".
- **Pressure Rating** - Sizes up to 4" are rated up to 4,000 PSI NSCWP. Sizes over 4" are rated to 2,500 PSI NSCWP.
- **Sealing Mechanism** - Metal to Metal seal (Ball and Cone sealing).
- **End Connection** - Threaded and socket-welded connections are available.
- **Colour Code** - Black nut & Red subs.

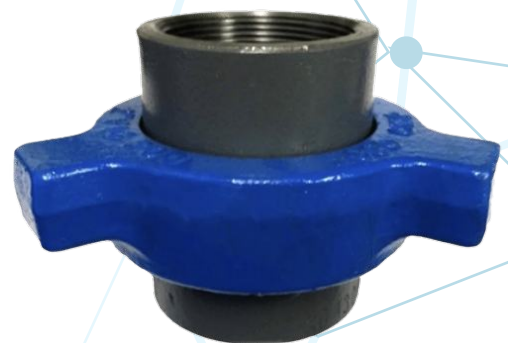


Fig 600 Union (Recommended for Standard service only)

Key features

- **Size Range** - Available from 1" and up to 4".
- **Pressure Rating** - Up to 6,000 PSI NSCWP (414 bar).
- **Sealing Mechanism** - A bronze seat is provided in the female sub for effective sealing.
- **End Connection** - Threaded and socket-welded connections are available.
- **Colour Code** - Black nut & Silver subs.

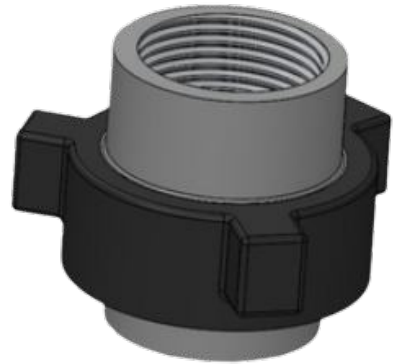


Fig 602 Union (Recommended for both Standard & Sour service)

Key features

- **Size Range** - Available from 1" and up to 4".
- **Pressure Rating** - Up to 6,000 PSI NSCWP (414 bar).
- **Sealing Mechanism** - A replaceable Lip type Buna-N Seal ring is provided.
- **End Connection** - Threaded and socket-welded connections are available.
- **Colour Code** - Black nut & Orange subs.

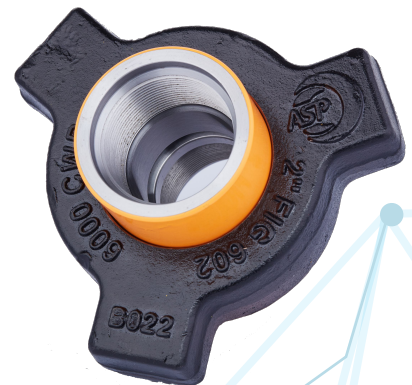


Fig 1002 Union (Recommended for Standard service only)

Key features

- **Size Range** - Available from 1" and up to 6".
- **Pressure Rating** - Up to 10,000 PSI NSCWP (690 bar).
- **Sealing Mechanism** - A replaceable Lip type Buna-N Seal ring is provided.
- **End Connection** - Threaded and socket-welded connections are available.
- **Colour Code** - Red nut & Blue subs.



Fig 1003 Union (Recommended for Standard & Sour service only)

Key features

- **Size Range** - Available from 2" and up to 5".
- **Pressure Rating** - Up to 10,000 PSI NSCWP (690 bar).
- **Sealing Mechanism** - Features a ball seat and an additional O-ring.
- **End Connection** - Threaded and butt-weld connections are available.
- **Colour Code** - Black nut & Green subs.

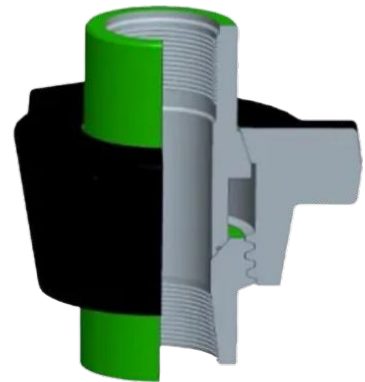


Fig 1502 Union (Recommended for both Standard & Sour service)

Key features

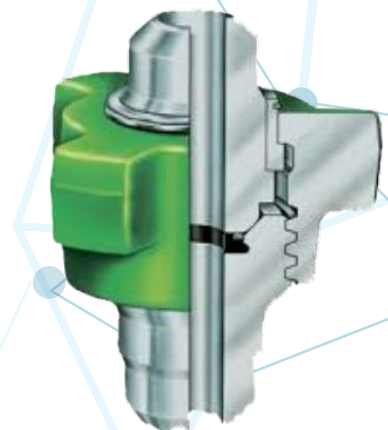
- **Size Range** - Available from 1" and up to 6".
- **Pressure Rating** - Up to 15,000 PSI NSCWP (1035 bar).
- **Sealing Mechanism** - A replaceable Lip type Buna-N Seal ring is provided.
- **End Connection** - Threaded and butt-weld connections are available.
- **Colour Code** - Blue nut & Red subs.



Fig 2002 & 2202 Union (Recommended for Standard service only)

Key features

- **Size Range** - Available from 2" to 6".
- **Pressure Rating** - Up to 20,000 PSI NSCWP (1380 bar).
- **Sealing Mechanism** - A replaceable Lip type Buna-N Seal ring is provided.
- **End Connection** - Only Butt-weld connection is available.
- **Colour Code** - Green nut & Grey subs.







Registered Office

ASIAN SEALING PRODUCTS PVT. LTD.

A3(2), SIPCOT INDUSTRIAL PARK, PILLAIPAKKAM, SRIPERUMBUDUR

602105 TAMIL NADU,

INDIA PHONE: +91 75400 75400

Email: info@asiansealing.in

Our Distributor in USA

HTX PRODUCTS LLC

333-A Northpark Central Drive Houston, Texas 77073, USA

PHONE: +1(281)571-7005

EMAIL: sales@htxproducts.com

www.htxproducts.com

Our Authorized Sales Agent in Egypt/Turkey/Africa/Middle East

SPEED SOLUTIONS OIL SERVICES

Cairo, New Cairo, 5th Settlement, I Superb, Section 7, Villa 84, Street 54.

Email: info@ssosco.co

